

## GP SERIES SELF-PRIMING PERIPHERAL PUMPS

GP series self-sucking water pumps are new designed high efficiency house-hold electric pumps, with the motor and the pump mounted together. They are sealed with wear-resistant mechanical sealing, and carry the merits of easy to operate, light weight, high efficiency and relative low consumption of power.

GP series pumps have self-sucking function, which makes it better used in places that pumping clean water, and request intermission the water from each restarting of kind of working, but without refilling the pumps.

### WORKING CONDITIONS

Max Temperature of Fluid up to +80℃

Max Pressure 10bar,

Max Ambient Temperature up to 40℃



GP

### CONSTRUCT

#### PUMP

Pump Body: Cast Iron/ Cast Iron with brass insert Impeller: Brass/ Plastic with brass insert

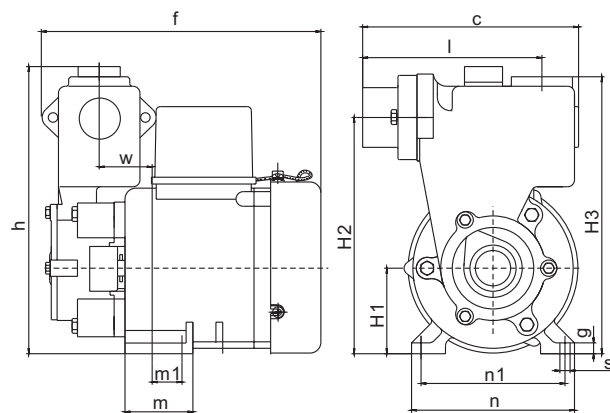
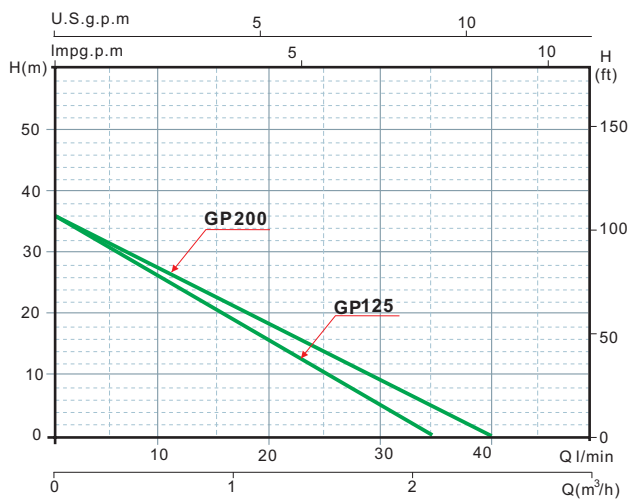
Mechanical Seal: Carbon/Ceramic/Stainless Steel

#### MOTOR

Single Phase Heavy Duty Continuous Work Motor Housing: Steel-plate Shaft: Carbon

Steel/Stainless Steel Insulation: Class B/Class F Protection: IP44/IP54

Cooling: External Ventilation



### TECHNICAL DATA

Model	Single-phase Motor			n=2850r/min			US g.p.m Imp g.p.m Q m3/h Lmin H meter	0	1.32	2.64	4	5.28	6.61	7.93	9.25	10.6	12	13	15	15.9					
	Input max KW	Power		Current	Q.max L/min	H.max m		Suct. max m	0	1.1	2.2	3.3	4.4	5.5	6.6	7.7	8.8	9.9	11	12	13.2				
		KW	HP						A	L/min	m	m	0	0.3	0.6	0.9	1.2	1.5	1.8	2.1	2.4	2.7	3	3.3	3.6
													0	5	10	15	20	25	30	35	40	45	50	55	60
GP-125	0.25	0.125	0.16	1.3	35	35	9	H meter	35	31	27	23	18	13.5	9	5									
GP-200	0.45	0.25	0.32	2.00	40	35			35	32	29	26	21.8	17.5	13.5	9.5	5								

**Standard data and equipment:** single phase 220V/50Hz, Brass impeller, carbon steel motor shaft, with terminal protector inside.

Others model and material such as three phase, 110V, 60Hz, dual voltage, stainless steel shaft, etc, will be available upon request.